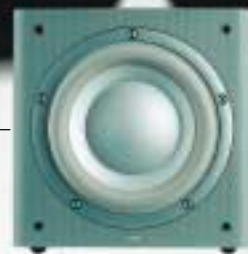


*serious*  
**mass**

*The B&W guide to finding and controlling deep bass*



PLEASE PROCEED WITH CAUTION





**Courteous warning**

Bowers & Wilkins respectfully asks all owners of subwoofer systems to take care. All B&W subs are capable of reproducing potentially unsociable levels of subsonic energy. Low frequency sound is incredibly powerful, and users should respect the privacy of others residing within the same or even nearby buildings.

# Why do you need serious bass?



**Jonathon Allen** Recording Engineer  
*Abbey Road Studios*

"Subwoofers are perfect tools for the movie soundtrack composer and sound engineer, magnifying the depth and space of the cinema-sound experience.

When recording and mixing film soundtracks there are no fixed rules. The music and the context of the film dictate the way I use the subwoofer channel, which is, after all, an extension of the overall bass.

I use the subwoofer channel in two ways to achieve specific results. Firstly, I extend the range and 'depth' of selected instruments. In an

orchestral score this could be the double bass spot microphone, or bass drum. Secondly, I spot various synthesised effects, which are either fixed for the entire film or used sparingly to enhance dramatic moments, such as a spaceship blasting off or a tear falling to the floor.

It's clear that subwoofers play an important role in bringing the cinema sound experience into the home. Serious bass for those who are serious about home cinema."



Many people equate the precious commodity of subwoofer bass only with high volume levels. Subwoofer-produced low frequency sound can be much more subtle than that, producing powerful subsonics, with low noise, or no noise whatsoever – subtle enough to create silent ripples in a tumbler of water.

Subwoofers are incredibly versatile, capable of blasting out huge chunks of low frequency energy, but also capable of a gentle teasing of the ears, when the sound is almost too low for your ears to discern. It can be more about feeling than hearing. And as your subwoofer teases your senses – tantalisingly close to being audible, but just out of your eardrum's limited reach – it can have an effect on the rest of your body, too. This experience is the magic, invisible power of the subwoofer that often precedes the loud, low frequency boom. And until you've experienced this phenomenon at first-hand, you haven't really experienced serious subsonic bass.

# Serious bass through technology and fine engineering

To reproduce serious subsonic bass, you need a completely different kind of loudspeaker – regular loudspeakers simply aren't up to the task. But what makes a good subwoofer? Bowers & Wilkins' reputation for pioneering and developing new loudspeaker technologies remains unsurpassed. Every detail is painstakingly tested, not just by machines, but also through exhaustive listening tests. But whilst B&W's approach is high-tech, it also recognises that a loudspeaker becomes a part of a person's everyday life, whether it's used for listening to music or watching movies, or both. B&W speakers are thoroughly tested in real-world environments, by real-world people. Nothing is left to chance. It is this attention to detail that ensures that B&W subwoofers are among the best in the world, and the ideal match for a B&W loudspeaker.

Subwoofer drive units create huge amounts of pressure within their cabinets and both the driver and cabinet must be built like a battleship to cope with the resulting stresses and strains. Any flimsiness will mean that overall sound quality will suffer and realism will fly out of the window. All B&W subwoofers are constructed to maximise bass and tame the pressure build up that can cause unwanted noise vibrations. In-house developments such as oversized magnets and enhanced mushroom construction keep bass to the fore, while putting a lid on superfluous noise vibrations.



## Oversized Magnet

Like a big engine in small car, a large magnet makes the driver more responsive and efficient. Adding extra magnetic force provides greater control and results in a faster sound with greater transient response. Using its in-house manufacturing ability, B&W uses huge, 'oversized' magnets in its top models. These massive devices exert an iron-like grip and ensure the drive unit is always in control no matter how demanding the programme.



## Diaphragm assembly

The huge internal pressures in a subwoofer will continually try and deform the drive unit's diaphragm. If allowed this will result in slow and sloppy bass. B&W bass drivers use a variety of materials and stiffening resins to make the diaphragm as rigid as possible. Most of our bass drivers feature B&W's unique mushroom construction which acts like a ring girder, increasing the total stiffness of the diaphragm assembly and transforming dynamic performance.



## Suspension

The driver suspension consists of a front roll surround, stiff enough to resist inversion from pressure changes inside the cabinet. Both maintain concentricity between the coil and the magnet gap throughout the long travel. Their resisting force is designed to increase progressively at the extremes of the available travel. This ensures that the sound quality when the driver is working hard is far better than if the cone were allowed to suddenly hit the end stops. For the top models in the range the drivers have a double rear suspension that drastically improves performance at higher volume levels.



## Ventilation

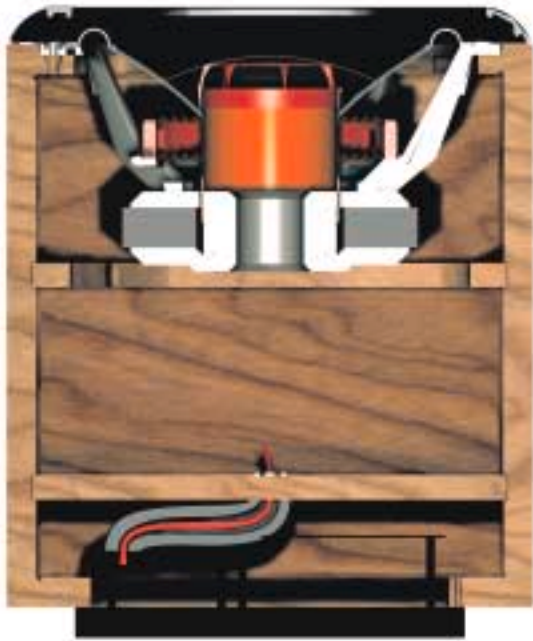
Bowers & Wilkins' driver chassis have a very open construction for increased air ventilation, and there is extensive open ventilation available between the various internal cavities behind the cone and in the magnet. The resulting free movement of air at the back of the driver provides two benefits. Firstly, it reduces viscous drag on the movement of the cone, avoiding slow sounding bass. Secondly, there is less spurious noise from air trying to squeeze through smaller openings, resulting in a cleaner sound.





### Full range amps

All B&W subwoofers feature full range amplifiers. Although only a fraction of that range is used in a subwoofer design, listening tests have shown that a full range amplifier provides a clear sonic advantage. For top models – which are designed for extremely extended output – added equalisation is needed and huge amounts of power required. These models feature Class D amplifiers with switch-mode power supplies (SMPS). SMPS are more efficient and compact than traditional designs and negate the need for a large transformer. B&W's Class D amplifiers provide high power output across the full audio bandwidth up to 40kHz.



### Cabinets

B&W cabinets are extensively braced using thick walls to create an inert environment. This prevents extraneous noise vibration and ensures that only the movement of the drive unit itself is heard. On most models, a separate, sealed amplifier cabinet ensures that the air pressure within the cabinet does not affect the delicate amplifier electronics.



# How to integrate a good subwoofer into your system

The best subwoofers should be flexible enough to fit seamlessly into almost any home cinema or hi-fi system. Such seamless integration is only possible if your chosen subwoofer has all the essential features crucial to the art of recreating subsonic bass. Fortunately, B&W subwoofers are engineered to integrate, and will work perfectly with whatever loudspeakers you choose.

Of course, it's not merely as easy as dropping your new subwoofer straight into the middle of your existing system. Follow these four easy steps to subsonic satisfaction, and integrate intelligently.

## Step 1

Before you even consider buying your subwoofer, check out the size of your room, and consider the quality, build and type of system with which it's going to be used. It sounds obvious, but it's fairly pointless investing in a massive subwoofer to use with a low-power, modest loudspeaker system, just as a small sub will struggle to make an impression when partnered with colossal floor-standing monsters and heavyweight amps. At the same time, don't buy a sub that only accepts line-level inputs if your amp doesn't have the equivalent outputs. Not rocket science, but worthy of a mention.

## Step 2

The positioning of a subwoofer follows similar rules to the placement of regular loudspeakers. Up against a flat wall provides more bass, corner placement even more, but may accentuate boomy resonances. If you think your existing system needs a boom boost, go for the corner; if your set-up and room acoustics turns every movie into a summer blockbuster boom fest, avoid. If you only have one sub, it doesn't matter which wall or corner you choose – to the side of your seating position is fine, and to the left or to the right of your front loudspeakers is just as good as alongside them.

## Step 3

To get the best out of the more popular corner room position, push your subwoofer as far into the corner as possible. Then, slowly pull it out, around an inch at a time, listening for the point at which it gives an even, controlled output and pushes out the deepest bass. Once you've pinpointed your subwoofer's optimum spot, leave it where it is – the optimum position for the most serious bass available for your system in your home cinema room.

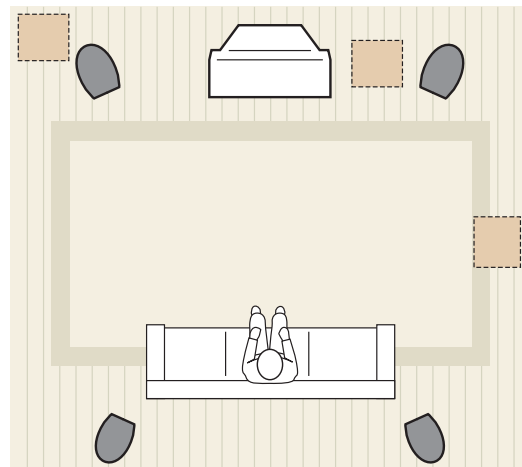
## Step 4


All B&W subwoofers (except AS1), have adjustments for the crossover roll-off-frequency and another for subwoofer volume level. For a home cinema where the subwoofer is a separate channel, B&W subwoofers allow you to by-pass the filter for optimum results. For 2-channel audio, it is best to set the subwoofer's crossover so that it just takes over from your other loudspeakers, before their own bass begins to roll off. Use the printed specifications as a guide and fine tune by ear. It is best to adjust the subwoofer's volume control by ear. Don't overdo the level: turn it down to a point where you can no longer distinctly hear its location. Even if there seems to be little actual bass in the programme, the sub will add to the sense of space and ambience.



## Room placement

Bass is less directional than mid and high frequencies so subwoofers can be positioned in many different places – even the side of a room will work effectively. As a rule of thumb, a corner position will provide more bass. You'll need to experiment to get the optimum performance.



 Indicates possible subwoofer positioning

 Indicates main and rear speakers

# Now test your system with some serious bass moments

## Minority Report Fox

COUNTER READING 0:50:29

In an automated car production plant, Precrime's wayward chief (Tom Cruise), uses a concussion-gun to avoid capture. Thanks to clever effects, the gun appears to disrupt the air around it, but the only thing that'll really be moving air is your subwoofer.



## Crouching Tiger Hidden Dragon Columbia Tri-Star

COUNTER READING 1:26:40

Possibly the best female swordplay ever filmed, with some great surround sound. As the women do battle, your subwoofer will be there to underpin the action. Without it, the dual will sound like a fight with knitting needles.



## American Beauty Dreamworks

COUNTER READING 0:16:50

Lester (Kevin Spacey) stares blankly at the cheerleaders' act, but the accompanying band's cheesy sounds make way for more intense, sub-fuelled music, as Lester's wayward imagination climaxes in desire, deep bass and red petals.



## Jurassic Park Universal

COUNTER READING 1:01:50

The T-Rex water-rippling scene shows how a subwoofer can be subtle too. A faint thud grows louder as the water in the tumbler begins to ripple, and your sub will begin to move more air. Then the T-Rex crashes into view, and it's subwoofer heaven.



## Das Boot Columbia Tri-Star

COUNTER READING 1:52:00

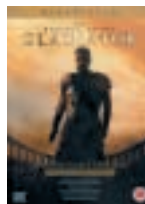
The best sub film ever made also has some of the best subwoofer action. As the water pressure threatens to tear the U-Boat apart and the bolts burst, your subwoofer fills your room with some serious low frequency effects. Then, the depth charges hit ...



## Gladiator Dreamworks

COUNTER READING 0:08:05

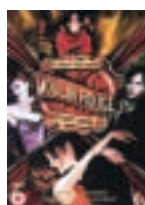
Possibly the most obvious use of the subwoofer channel here, the film's big set-piece battle is a perfect illustration of your sub's importance. Just try watching the scene with it switched off: it's more like a pillow fight than the unleashing of hell!



## Moulin Rouge Fox

COUNTER READING 0:11:11

Your subwoofer is just as important for music as sound effects. The introduction to the Diamond Dogs dancing girls is a perfect illustration of this, with oodles of deep bass dragging the Moulin Rouge kicking and screaming into your living room.



Home cinema simply wouldn't be the same without a subwoofer. Its deep bass underpins every film you watch at the cinema, and the very same soundtrack is faithfully transferred to DVD. And why would you want to miss out on watching a movie 'just as the director intended'? Surely that's what home cinema is all about – recreating the cinematic experience in the home.

Once you've invested in a subwoofer for your home cinema, you'll marvel at how hard it works and the variety of work it does. Take this selection of films, for example. As well as action movies where perhaps a subwoofer is expected to shine, there are less likely examples of deep bass joy too. Whatever film you choose to watch, a subwoofer is central to the action – it wouldn't be genuine home cinema without one.

*Turn the page for a comprehensive breakdown of B&W's subwoofer range. Every model will produce the scale of these deep bass movie moments with pinpoint accuracy. Simply choose the specification and style to match your requirements ...*



# B&W ASW 800, ASW 850 Subwoofers



The ASW 800 and ASW 850 are part of B&W's Nautilus 800 series, the benchmark for all domestic and studio loudspeakers. Both models are intended for the best home cinema and music applications and can powerfully supplement any of the Nautilus 800 speakers in all sizes of room.

The ASW 850 and ASW 800 both use B&W's unique Matrix® bracing to form a structure that is free from cabinet movement, ensuring a complete freedom from upper-bass coloration.



B&W's Nautilus range of loudspeakers and subwoofers have pride of place at the heart of the Abbey Road sound studios. Abbey Road's engineers use the ASW 850 to extend the range and 'depth' of selected instruments and to spot various synthesised effects.



**The complete picture – Nautilus 800 Series** *See Specifications for colour options*  
Nautilus 800, 801, 802, 803, 804, 805, SCM1, HTM1, HTM2, ASW 850, ASW 800





# B&W ASW CDM Subwoofer

B&W's ASW CDM subwoofer is part of the popular CDM Series of loudspeakers. It incorporates a 300mm driver and a powerful 1000W amplifier module. The ASW CDM cabinet is styled to follow the CDM range concept, with rounded edges to the side panels. A closed box design makes installation easy, and all sound derives from the front fascia. Like all B&W models, the cabinet is extensively braced and sealed, and the 1000W amplifier is isolated in a separate cabinet at the back.



#### SMPS High power amplifier

The ASW CDM amp features Class D operation and switch mode power supplies (SMPS). The Class D amplifier provides high power outputs across the full audio bandwidth up to 40kHz.



#### Mushroom

Mushroom construction acts like a ring girder, increasing the total stiffness of the diaphragm assembly and enhancing dynamic performance.

**The complete picture – CDM Series** *See Specifications for colour options*  
ASW CDM, CDM CNT, CDM SNT, CDM 1NT, CDM 7NT, CDM 9NT



# B&W ASW CM Subwoofer



The CM Series combines stylish good looks with world-renowned B&W sound technology, and the ASW CM subwoofer is the perfect match for its CM siblings. Designed in classic CM Series style, this subwoofer has a striking aluminium front panel and choice of wood veneers. Compact enough not to take over modest sized rooms, it can generate enough deep bass power to fill much larger soundstages. A 500W amplifier combines with a 10inch driver, oversized magnet and high-power voice coil to move large volumes of air with ease.



### Oversized magnet

This massive, oversized magnet exerts an iron-like grip and ensures the drive unit is always in control no matter how demanding the programme.



## The complete picture – CM Series *See Specifications for colour options*

CM 6, CM 4, CM 2, CM C, ASW CM



# B&W ASW 675, ASW 650, ASW 600 Subwoofers

Three subwoofer models, the ASW 600, ASW 650 and ASW 675, compliment the award-winning 600 Series 3 loudspeakers. The best model in this range is the ASW 675, an astonishingly powerful, yet compact model, featuring a newly developed, ultra-low distortion 10inch drive unit, and a 500W amplifier.

A co-star it might be, but the ASW 650 is no sub slouch, boasting a 200W amplifier and 12inch paper/Kevlar® drive unit. Intended for smaller rooms and more modest systems, the ASW 600 is a star turn also, with a 150W amp and a 10inch paper/Kevlar® driver.



#### Ventilation

Bowers & Wilkins' driver chassis have a very open construction for increased air ventilation, and there is extensive open ventilation available between the various internal cavities behind the cone and in the magnet.

#### Separate amplifier cabinet\*

The ASW 675 features a separate, sealed amplifier enclosure. This ensures that the air pressure within the cabinet does not affect the performance of the delicate amplifier electronics.

\*ASW 675 only.

### The complete picture – 600 Series 3 See Specifications for colour options

ASW 600, ASW 650, ASW 675, LCR60 S3, LCR600 S3, DM600 S3, DM601 S3, DM602 S3, DM602.5 S3, DM603 S3, DM604 S3



# B&W ASW 300 Subwoofer



B&W's 300 Series of loudspeakers rewrote the rulebook for entry-level speaker design when they were first unleashed upon the hi-fi and home cinema market. That they continue to do so is testament to their impressive lineage – the acclaimed Nautilus 800 Series – and B&W's revered ability to adapt its high-end technology for use on entry-level designs.

The ASW 300 subwoofer generates powerful sub bass from inside a compact, yet stylish cabinet, and is designed to be the ideal partner for all 300 Series speakers, whether hi-fi or full home cinema. Featuring an 8inch paper/Kevlar® drive cone and a 100W amplifier, the ASW 300 humbles other subs in its class.



## Full range amplifier

Although only a fraction of the ASW 300's amplifier is used, listening tests have shown that a full range amplifier provides a clear sonic advantage.



**The complete picture – 300 Series** See Specifications for colour options  
DM309, DM303, LCR3, ASW 300



The ultra compact AS1 active subwoofer is ideally suited to the bass requirements of B&W's other Leisure Monitor loudspeakers. The VM1 and LM1 Leisure Monitor range was created to blend with today's living environments and to complement high-tech, high style audio-video products, such as plasma and widescreen TV.

The AS1 is at home with any combination of VM1 or LM1 speakers, underpinning their unrivalled sound quality and discrete style with its own unique looks and serious bass performance. The AS1's 85W amplifier, and 6.5inch cone driver produce a surprising level of subsonic bass, when you consider its diminutive size.



#### Flowport

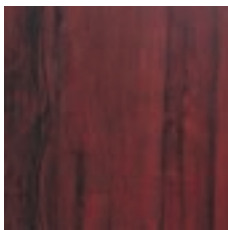
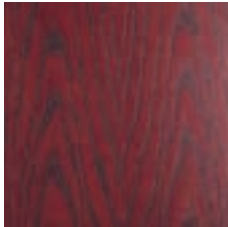
Some bass cabinets create turbulence in the pulse of air that oscillates in and out of the tuning port, resulting in an audible 'chuffing' effect.

Situated at the front of the AS1, B&W's unique Flowport system uses golf ball aerodynamics to smooth the airflow of the sub, so reducing this acoustic interference.

**The complete picture – Leisure Monitor Series** *See Specifications for colour options*  
AS1, LM1, VM1



# Specifications



All B&W Active Subwoofers offer a choice of high quality finishes in either real wood veneers or high quality vinyl. See the specifications charts for individual model options.

*The swatches above are provided as a guide only.*

	ASW 850	ASW 800
<b>Technical features</b>	<b>Mushroom construction, double suspension drive unit</b> <b>Full range 1000W SMPS amplifier</b> <b>Separate amplifier cabinet</b> <b>Matrix</b>	<b>Mushroom construction, double suspension drive unit</b> <b>Full range 1000W SMPS amplifier</b> <b>Separate amplifier cabinet</b> <b>Matrix</b>
<b>Description</b>	Active closed-box subwoofer system	Active closed-box subwoofer system
<b>Drive Unit</b>	ø380mm (15 in) paper/Kevlar® cone long-throw	ø300mm (12 in) paper/Kevlar® cone long throw
<b>Frequency Range</b>	-6dB at 14Hz and 40/140Hz adjustable (EQ at A)	-6dB at 15Hz and 40/140Hz adjustable (EQ at A)
<b>Frequency Response</b>	±3dB 18Hz – 31/110Hz adjustable (EQ at A)	±3dB 20Hz – 31/110Hz adjustable (EQ at A)
<b>Amplifier</b>	Power output: 1000W continuous Input Impedance: 33kΩ Signal/Noise: >90dB Functions: Input Level Low-pass filter frequency Low-pass filter bypass Bass roll-off alignment Auto sense on/standby Phase switch	Power output: 1000W continuous Input Impedance: 33kΩ Signal/Noise: >90dB Functions: Input Level Low-pass filter frequency Low-pass filter bypass Bass roll-off alignment Auto sense on/standby Phase switch
<b>Inputs:</b>	Line In (RCA Phono)	Line In (RCA Phono)
<b>Outputs:</b>	Line Out (RCA Phono) high-passed Link Out (RCA Phono)	Line Output (RCA Phono) high-passed Link Out (RCA Phono)
<b>Low-Pass Filter</b>	Active 2nd-order, variable cut-off frequency	Active 2nd-order, variable cut-off frequency
<b>High-Pass Filter</b>	Active 3rd-order -6dB at 80Hz	Active 3rd-order -6dB at 80Hz
<b>Rated power consumption</b>	150W	150W
<b>Dimensions</b>	Height: 529mm (20.8 in) not including feet Width: 562mm (22.1 in) Depth: 522mm (20.6 in) including grille and controls	Height: 529mm (20.8 in) not including feet Width: 476mm (18.7 in) Depth: 351mm (13.8 in) including grille and controls
<b>Net Weight</b>	45kg (99 lb)	35kg (77 lb)
<b>Finish</b>	Cabinet: Black Ash, Cherrywood and Red stained Cherrywood real wood veneers Grille: Black Cloth	Cabinet: Black Ash, Cherrywood and Red stained Cherrywood real wood veneers Grille: Black Cloth
	<b>ASW CDM</b>	<b>ASW CM</b>
<b>Technical features</b>	<b>Mushroom construction, double suspension drive unit</b> <b>Full range 1000W SMPS amplifier</b> <b>Separate amplifier cabinet</b>	<b>Mushroom construction, double suspension drive unit</b> <b>Full range 500W SMPS amplifier</b> <b>Separate amplifier cabinet</b>
<b>Description</b>	Active closed-box subwoofer system	Active closed-box subwoofer system
<b>Drive Unit</b>	ø300mm (12in) paper/Kevlar® cone long-throw	ø250mm (10in) composite aluminium/paper/Kevlar® cone long-throw
<b>Frequency Range</b>	-6dB at 15Hz and 40/140Hz adjustable (EQ at A)	-6dB at 17Hz and 40/140Hz adjustable (EQ at A)
<b>Frequency Response</b>	±3dB 22Hz – 31/110Hz adjustable (EQ at A)	±3dB 22Hz – 31/110Hz adjustable (EQ at A)
<b>Amplifier</b>	Power output: 1000W continuous Input Impedance: 33kΩ Signal/Noise: >90dB Functions: Volume level Low-pass filter frequency Low-pass filter bypass Bass roll-off alignment Auto sense on/standby Phase switch	Power output: 500W continuous Input Impedance: 33kΩ Signal/Noise: >90dB Functions: Volume level Low-pass filter frequency Low-pass filter bypass Bass roll-off alignment Auto sense on/standby Phase switch
<b>Inputs:</b>	Line In (RCA Phono)	Line In (RCA Phono)
<b>Outputs:</b>	Line Out (RCA Phono) high-passed Link Out (RCA Phono)	Line Output (RCA Phono) high-passed Link Out (RCA Phono)
<b>Low-Pass Filter</b>	Active 2nd-order, variable cut-off frequency	Active 2nd-order, variable cut-off frequency
<b>High-Pass Filter</b>	Active 3rd-order -6dB at 80Hz	Active 3rd-order -6dB at 80Hz
<b>Dimensions</b>	Height: 392mm (15.4in) excluding spiked feet Width: 396mm (15.6in) Depth: 490mm (19.3in) including grille and controls	Height: 340mm (13.4in) excluding spiked feet Width: 340mm (13.4in) Depth: 402mm (15.8in) including grille and controls
<b>Net Weight</b>	32.5kg (72lb)	27kg (60lb)
<b>Finish</b>	Cabinet: Black Ash, Cherrywood or Red Stained Cherrywood real wood veneers Grille: Black cloth	Cabinet: Black Ash, Maple and Rosenuit real wood veneers Grille: Black cloth

	ASW 675	ASW 650	ASW 600
<b>Technical features</b>	<b>Mushroom construction, double suspension drive unit</b> <b>Full range 500W SMPS amplifier</b> <b>Separate amplifier cabinet</b>	<b>Paper/Kevlar® stiffened drive unit</b> <b>Full range 200W amplifier</b> <b>Speaker level inputs</b>	<b>Paper/Kevlar® stiffened drive unit</b> <b>Full range 150W amplifier</b> <b>Speaker level inputs</b>
<b>Description</b>	Active closed-box subwoofer system	Active closed-box subwoofer system	Active closed-box subwoofer system
<b>Drive unit</b>	Ø250mm (10in) composite aluminium/paper/Kevlar® cone long-throw	Ø300mm (12in) paper/Kevlar® cone	Ø250mm (10 in) paper/Kevlar® cone
<b>Frequency range</b>	-6dB at 17Hz and 40/140Hz adjustable (EQ at A)	-6dB at 20Hz and 180Hz adjustable (EQ at A)	-6dB at 22Hz and 180Hz adjustable (EQ at A)
<b>Frequency response</b>	±3dB 22Hz – 31/110Hz adjustable (EQ at A)	±3dB 25Hz – 150Hz adjustable (EQ at A)	±3dB 26Hz – 150Hz adjustable (EQ at A)
<b>Amplifier</b>	Power output: 500W continuous Input Impedance: 33kΩ Signal/Noise: >90dB Functions: Volume level Low-pass filter frequency Low-pass filter bypass Bass roll-off alignment Auto sense on/standby Phase switch	Power output: 200W continuous Input Impedance: 22kΩ Signal/Noise: >90dB Functions: Volume level Low-pass filter frequency Low-pass filter bypass Bass roll-off alignment Auto sense on/standby Phase switch	Power output: 150W continuous Input Impedance: 22kΩ Signal/Noise: >90dB Functions: Volume level Low-pass filter frequency Low-pass filter bypass Bass roll-off alignment Auto sense on/standby Phase switch
	Inputs: Line In (RCA Phono)	Inputs: Line In (RCA Phono) Speaker level (binding posts)	Inputs: Line In (RCA Phono) Speaker level (binding posts)
	Outputs: Line Out (RCA Phono) high-passed Link Out (RCA Phono)	Outputs: Line Out (RCA Phono) Link Out (RCA Phono) Speaker level out high-passed	Outputs: Line Out (RCA Phono) high-passed Link Out (RCA Phono) Speaker level out high-passed)
<b>Low-pass filter</b>	Active 2nd-order, variable cut-off frequency	Active 2nd-order, variable cut-off frequency	Active 2nd-order, variable cut-off frequency
<b>High-pass filter</b>	Active 3rd-order -6dB at 80Hz	Active 3rd-order -6dB at 80Hz	Active 3rd-order -6dB at 80 Hz
<b>Dimensions</b>	Height: 340mm (13.4in) excluding spiked feet Width: 340mm (13.4in) Depth: 411mm (16.2in) including grille and controls	Height: 417mm (16.4in) not excluding spiked feet Width: 415mm (16.3in) Depth: 495mm (19.5in) including grille and controls	Height: 365mm (14.4in) excluding spiked feet Width: 365mm (14.4in) Depth: 495mm (17.7in) including grill and controls
<b>Net Weight</b>	25.5kg (56lb)	25.5kg (56lb)	19.5kg (43lb)
<b>Finish</b>	Cabinet: Black Ash or light oak Sorrento Grille: Black cloth	Cabinet: Black Ash or light oak Sorrento Grille: Black cloth	Cabinet: Black Ash or light oak Sorrento Grille: Black cloth
	<b>ASW 300</b>	<b>AS1</b>	
<b>Technical features</b>	<b>Paper/Kevlar®stiffened drive unit</b> <b>Full range 100W amplifier</b> <b>Speaker level inputs</b>	<b>Full range 85W amplifier</b> <b>Speaker level inputs</b> <b>Ease of use Music/Movie mode switching</b>	
<b>Description</b>	Active vented-box subwoofer system	Active vented-box subwoofer system	
<b>Drive unit</b>	Ø200mm (8 in) paper/Kevlar® cone	Ø165mm (6.5in) paper cone	
<b>Frequency range</b>	-6dB at 23Hz and 180Hz adjustable (EQ at A)	-6dB at 27Hz and 75Hz adjustable Music/Movie mode	
<b>Frequency response</b>	±3dB 27Hz – 150Hz adjustable (EQ at A)	±3dB 34Hz – 75Hz Music mode ±3dB 27Hz – 75Hz Movie mode	
<b>Amplifier</b>	Power output: 100W continuous Input Impedance: 22kΩ Signal/Noise: >90dB Functions: Volume level Low-pass filter frequency Low-pass filter bypass Bass roll-off alignment Auto sense on/standby Phase switch	Power output: 85W continuous Input Impedance: 100kΩ Signal/Noise: >90dB Functions: Volume level Music/Movies switch	
	Inputs: Line In (RCA Phono) Speaker level (binding posts)	Inputs: Line In (RCA Phono) Speaker level (spring clips)	
	Outputs: Line Out (RCA Phono) high-passed Link Out (RCA Phono) Speaker level out high-passed)	Outputs: Line Out (RCA Phono) Speaker level (unfiltered)	
<b>Low-pass filter</b>	Active 2nd-order, variable cut-off frequency		
<b>High-pass filter</b>	Active 3rd-order -6dB at 80 Hz		
	Speaker Level: Passive 1st-order at 80Hz (8Ω load)		
<b>Dimensions</b>	Height: 405mm (16in) including feet Width: 330mm (13in) Depth: 375mm (17.7in) including grill and controls	Height: 378mm (14.9in) Width: 250mm (9.8in) Depth: 385mm (15.2in)	
<b>Net Weight</b>	15kg (33lb)	11kg (33lb)	
<b>Finish</b>	Cabinet: Black Ash or Maple Grille: Black cloth	Cabinet/Grille: Black vinyl with black grille Silver with grey grille	

## **B&W** Bowers & Wilkins

B&W Loudspeakers Ltd T +44 (0) 1903 221800  
Dale Road F +44 (0) 1903 524725  
Worthing West Sussex info@bwspeakers.com  
BN11 2BH England www.bwspeakers.com

UK Sales Enquiries and Service  
T +44 1903 221 500  
E uksales@bwspeakers.com

B&W Loudspeakers of America  
T +1 978 664 2870  
E marketing@bwaudio.com

B&W Loudspeakers (Asia) Ltd  
T +852 2 790 8903  
E bwahome@bwspeakerasia.com.hk

Kevlar is a registered trademark of DuPont.  
Nautilus is a trademark of B&W Loudspeakers Ltd.  
Copyright © B&W Loudspeakers Ltd.  
Design by Richard Evans. Printed in the UK.  
B&W Loudspeakers Ltd reserves the right to amend  
details of the specifications without notice in line  
with technical developments.